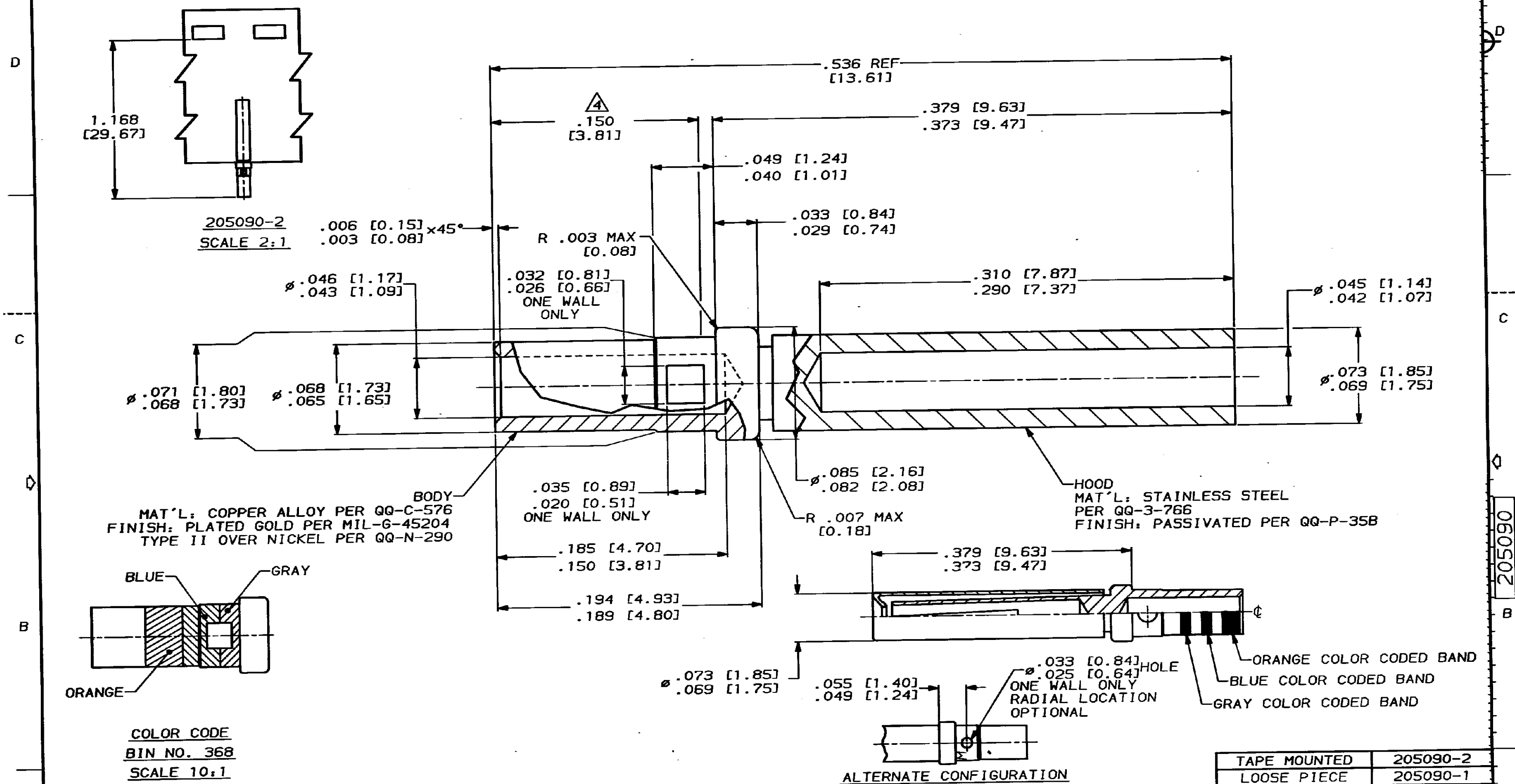


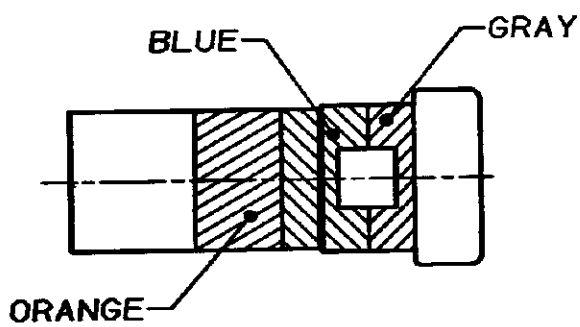
DRAWING MADE IN THIRD ANGLE PROJECTION  
 THIS DRAWING IS UNPUBLISHED. RELEASED FOR PUBLICATION  
 © COPYRIGHT 19 BY AMP INCORPORATED. ALL INTERNATIONAL RIGHTS RESERVED.

PROJ		LOC		DIST		REVISIONS			
CODE	DF	DO	P	F	ZONE	LTR	DESCRIPTION	DATE	APPD
5054	DF	DO				J	REV & REDWN PER DF-3571	CT	-
						K	REV PER DF-3808	BR	10-90 AE



**BODY**  
 MAT'L: COPPER ALLOY PER QQ-C-576  
 FINISH: PLATED GOLD PER MIL-6-45204  
 TYPE II OVER NICKEL PER QQ-N-290

**HOOD**  
 MAT'L: STAINLESS STEEL  
 PER QQ-3-766  
 FINISH: PASSIVATED PER QQ-P-35B



**COLOR CODE**  
 BIN NO. 368  
 SCALE 10:1

1. ALL DIMENSIONS APPLY AFTER PLATING.
2. THIS DRAWING COMPLIES WITH SPECIFICATION MIL-C-39029/63 AND M24308/10-1.
3. ALL DIAMETERS CONCENTRIC WITH EACH OTHER WITHIN .004 T.I.R.
4. POINT OF PLATING MEASUREMENT .150 [3.81] FROM WIRE BARREL END OF CONTACT.
5. ALL SURFACES HAVE  $\sqrt{63}$  OR BETTER FINISH.

ALTERNATE CONFIGURATION

TAPE MOUNTED	205090-2
LOOSE PIECE	205090-1
DISCRIPTION	PART NO.

DO NOT SCALE PRINT. UNLESS SPECIFIED DIMENSIONS IN INCHES (mm) TOLERANCES ON: 2 PLC DEC ± 3 PLC DEC ± .005 (0.13) ANGLES ± 2°	DR 7-11-90 C.C. THOMAS	<b>AMP</b> AMP Incorporated Harrisburg, PA 17105-3608	
	CHK 7-12-90 A. EMADI		
	MATERIAL SEE CALLOUT	APPD 7-12-90 A. EMADI	NAME CONTACT ASS'Y, SOCKET, SIZE 20, AMPLIMITE
FINISH SEE CALLOUT	APPD 7-12-90 C.C. THOMAS	SIZE C 00779	DRAWING NO. 205090
	PRODUCT SPEC	SCALE 20:1	SHEET 1 OF 1
	APPLICATION SPEC		
	WEIGHT		

CUSTOMER DRAWING